

Firmware upload for TDA 2200 / TDA 2200+

First make sure that you have downloaded the firmware for the correct version of the TDA 2200. There are three different HW versions, which uses three different firmwares. You can see which version of the TDA 2200 you have by checking the display of your TDA 2200.

LYNGDORF TDA2200
Preset: 1 Fs=---kHz

If your display just shows “Lyngdorf TDA2200” it is the original version and you should download the firmware for “TDA 2200”.

LYNGDORF TDA2200+
Preset: 1 Fs=---kHz

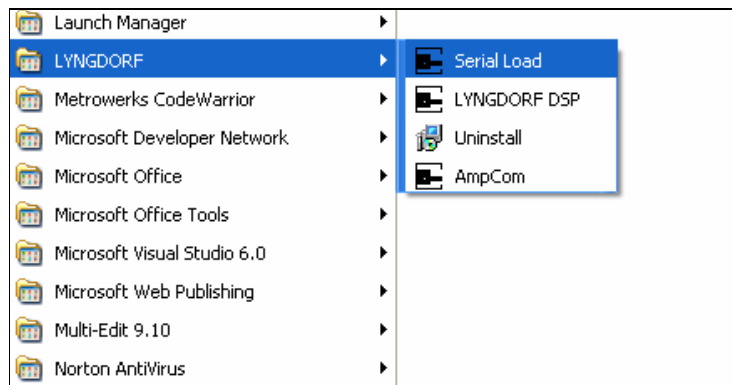
If your display shows “Lyngdorf TDA2200+” it is the plus version prepared for RoomPerfect and you should download the firmware for “TDA 2200+”.

RoomPerfect inactive
Neutral Fs=---kHz

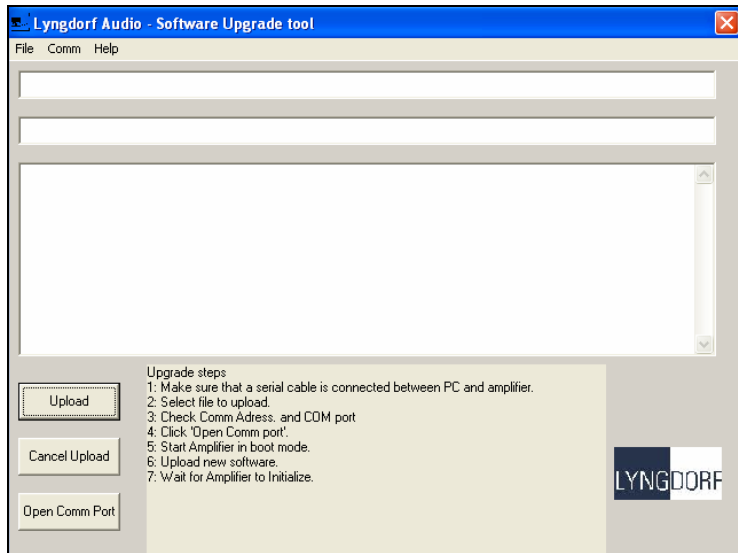
If your display looks similar to this, you have a TDA 2200+ with RoomPerfect installed, and you should download the firmware for “TDA 2200+ with RoomPerfect”

This download guide will describe the upload procedure for the “TDA 2200” and the “TDA 2200+”. For uploading the firmware in the “TDA 2200+ with RoomPerfect” please refer to the download guide for that version.

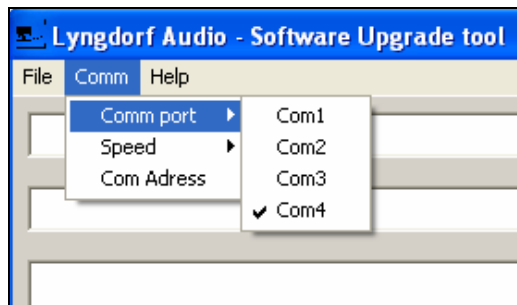
For uploading the firmware to the TDA 2200 you must first install the PC pack available on the lyngdorf web site. After installation of the PC pack the following shortcuts should be available in the Start menu of Windows XP:



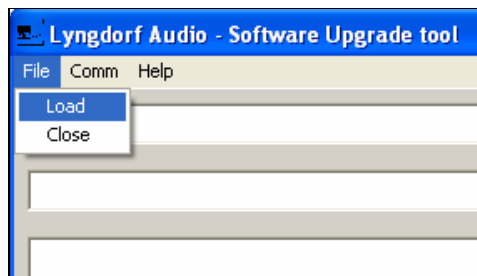
Select the shortcut Serial Load. The following screen appears:



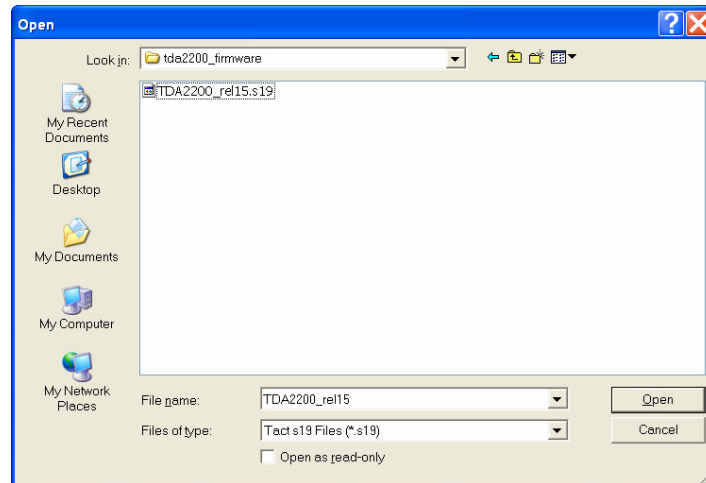
Follow the upgrade steps shown in the program window. First you have to be sure that you have a serial cable between the PC and TDA 2200. The cable has to be connected to a COM port on the PC. In case you have a laptop PC with no COM port you can get a USB to COM port device in most computer stores. When connected, select the correct port settings here:



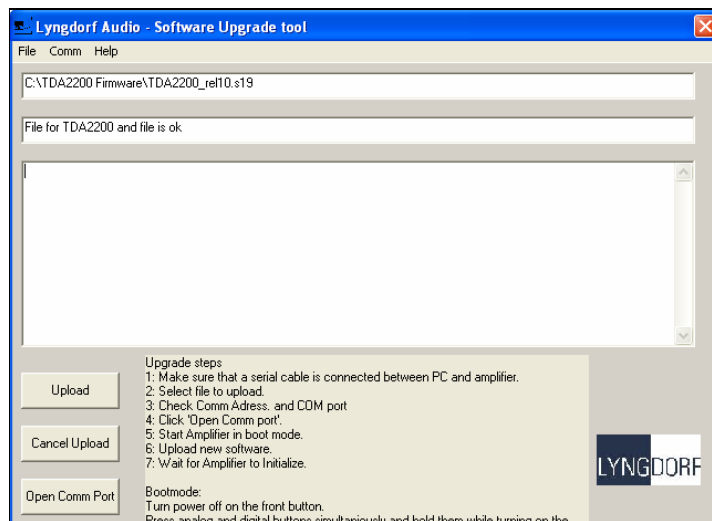
The next step is to load the file you wish to upload to TDA 2200. It is found in the released zip file, for example TDA2200_sw_10.zip. You have to unpack this to a folder you can find again. Select the file from the Serial loader program:



A file selection screen appears:



Find and select the file and then press “Open”. The following screen should appear:



Now make sure that the TDA 2200 is turned off by the power button on the front panel. Click Open Comm Port on the Serial Loader program. The program now waits for the TDA 2200 to be turned on in boot mode.

Setting the TDA 2200 into boot mode is done by pressing the analog and digital buttons simultaneously while turning on the power. Now you can release both pressed buttons on the TDA 2200 and press the upload button in the Serial loader program. You should now be able to see the upload progress on both the PC and the TDA 2200. When done the TDA 2200 restarts and it will default all parameters. This may take a while.

After that you have upgraded the firmware and you can close the PC software.