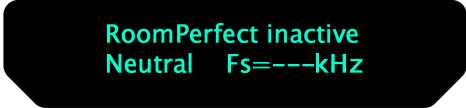


## Firmware upload for TDA 2200+ with RoomPerfect™

This guide will describe the process for updating the firmware in the TDA 2200+ amplifier with RoomPerfect™. Make sure that your amplifier is the correct version. A TDA 2200+ with RoomPerfect™ should have a display similar to the one shown below.



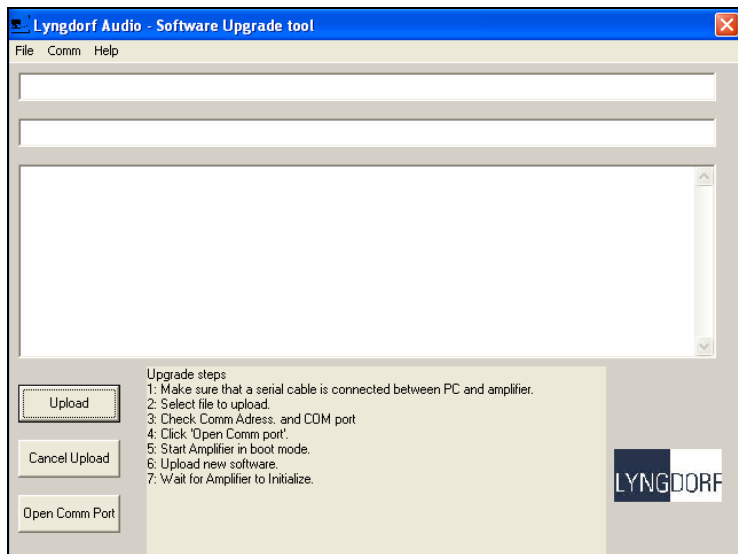
If you have an older version of TDA 2200 without RoomPerfect, then you should refer to the guide for uploading these older versions.

There are two different firmwares for the amplifier. One for the TDA 2200+ and one for the RoomPerfect™ module. Both of these firmwares can be downloaded from the Lyngdorf web site and upgraded. In addition to downloading the firmware, you will need to download the "RoomPerfect BootL" pc software and install it. Once you have installed it, you should have two programs in your Windows Start menu. The Serial Load program is for updating the TDA 2200+ firmware and the RoomPerfect Bootloader program is for upgrading the RoomPerfect™ module.

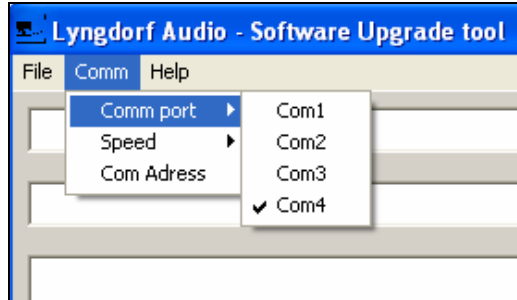


## Procedure for uploading the TDA 2200+ software

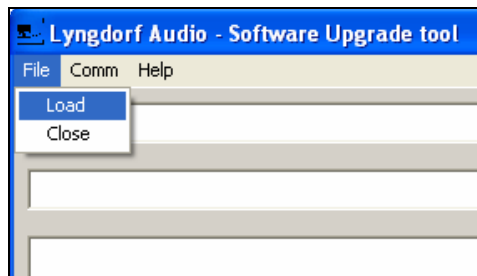
Start the Serial Load program.



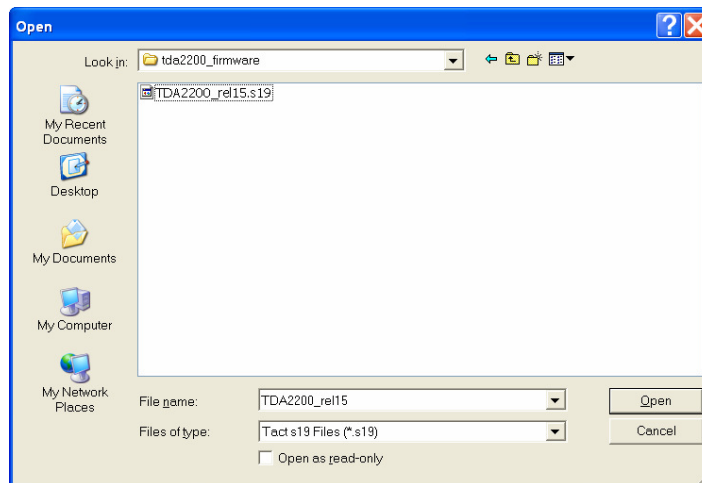
Follow the upgrade steps shown in the program window. First you have to be sure that you have a serial cable between the PC and TDA 2200. The cable has to be connected to a COM port on the PC. In case you have a laptop PC with no COM port you can get a USB to COM port device in most computer stores. When connected, select the correct port settings here:



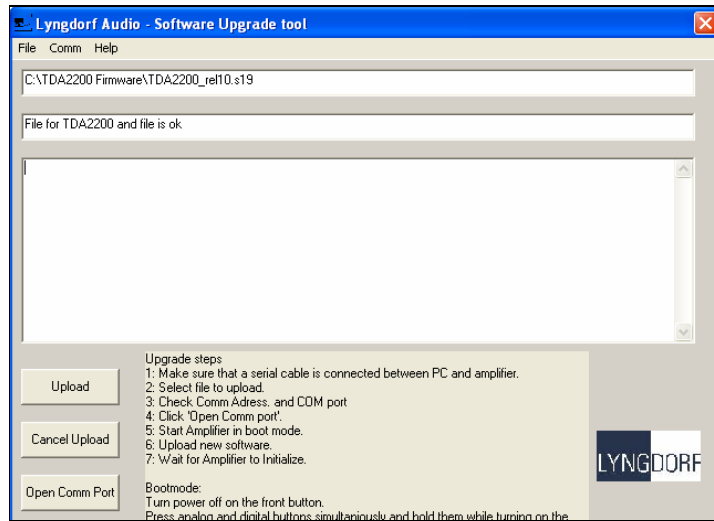
The next step is to load the file you wish to upload to TDA 2200. It is found in the released zip file, for example TDA2200\_sw\_10.zip. You have to unpack this to a folder you can find again. Select the file from the Serial loader program:



A file selection screen appears:



Find and select the file and then press "Open". The following screen should appear:



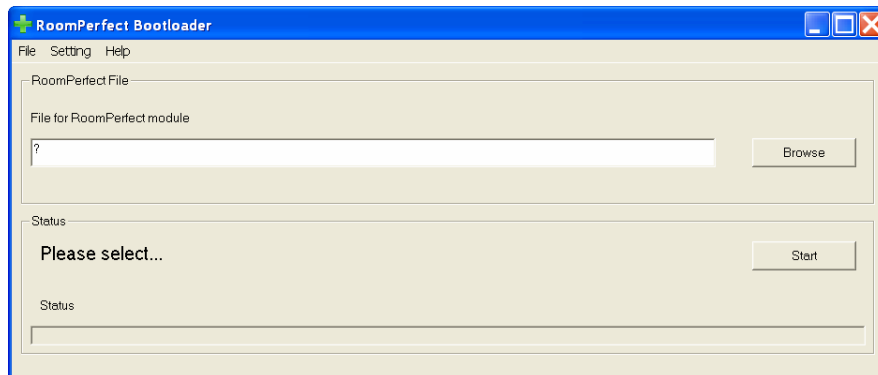
Now make sure that the TDA 2200 is turned off by the power button on the front panel. Click Open Comm Port on the Serial Loader program. The program now waits for the TDA 2200 to be turned on in boot mode.

Setting the TDA 2200 into boot mode is done by pressing the analog and digital buttons simultaneously while turning on the power. Now you can release both pressed buttons on the TDA 2200 and press the upload button in the Serial loader program. You should now be able to see the upload progress on both the PC and the TDA 2200. When done the TDA 2200 restarts and it will default all parameters. This may take a while.

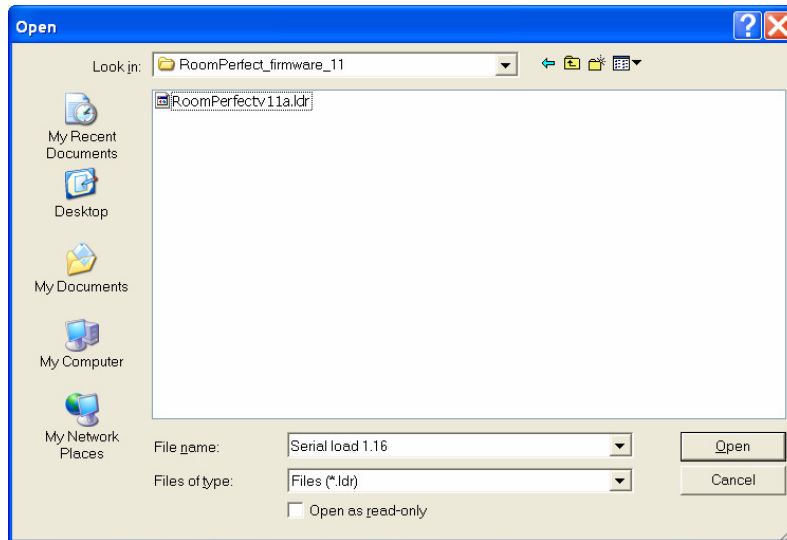
After that you have upgraded the firmware and you can close the PC software.

## Procedure for uploading the RoomPerfect™ module firmware

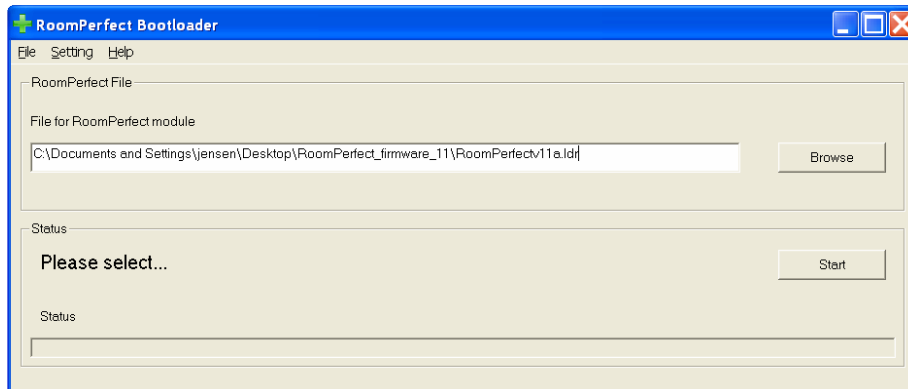
Start up the RoomPerfect Bootloader program.



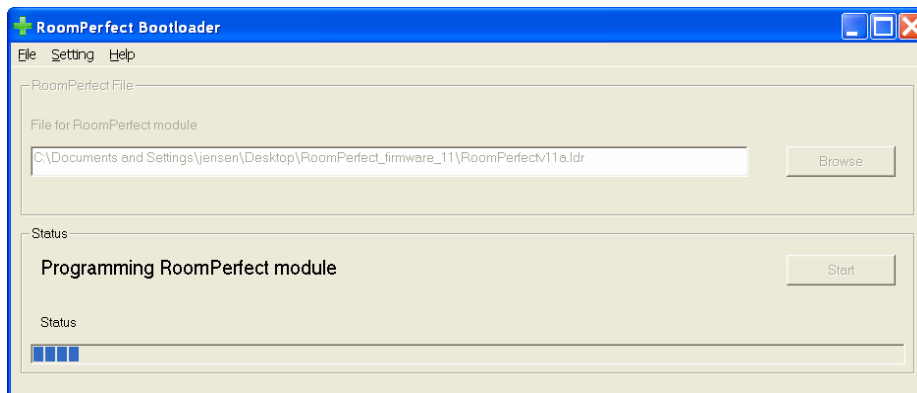
Go to the settings menu to select the appropriate settings for COM port etc. Then click "Browse" to find the file to upload.



Choose the file, you wish to upload and press “Open”



Make sure the PC and the TDA 2200+ are connected with the serial cable and the TDA 2200+ is turned on. Then press the “Start” button.



When the programming has finished the following screen should be shown, and your RoomPerfect module has been updated.

